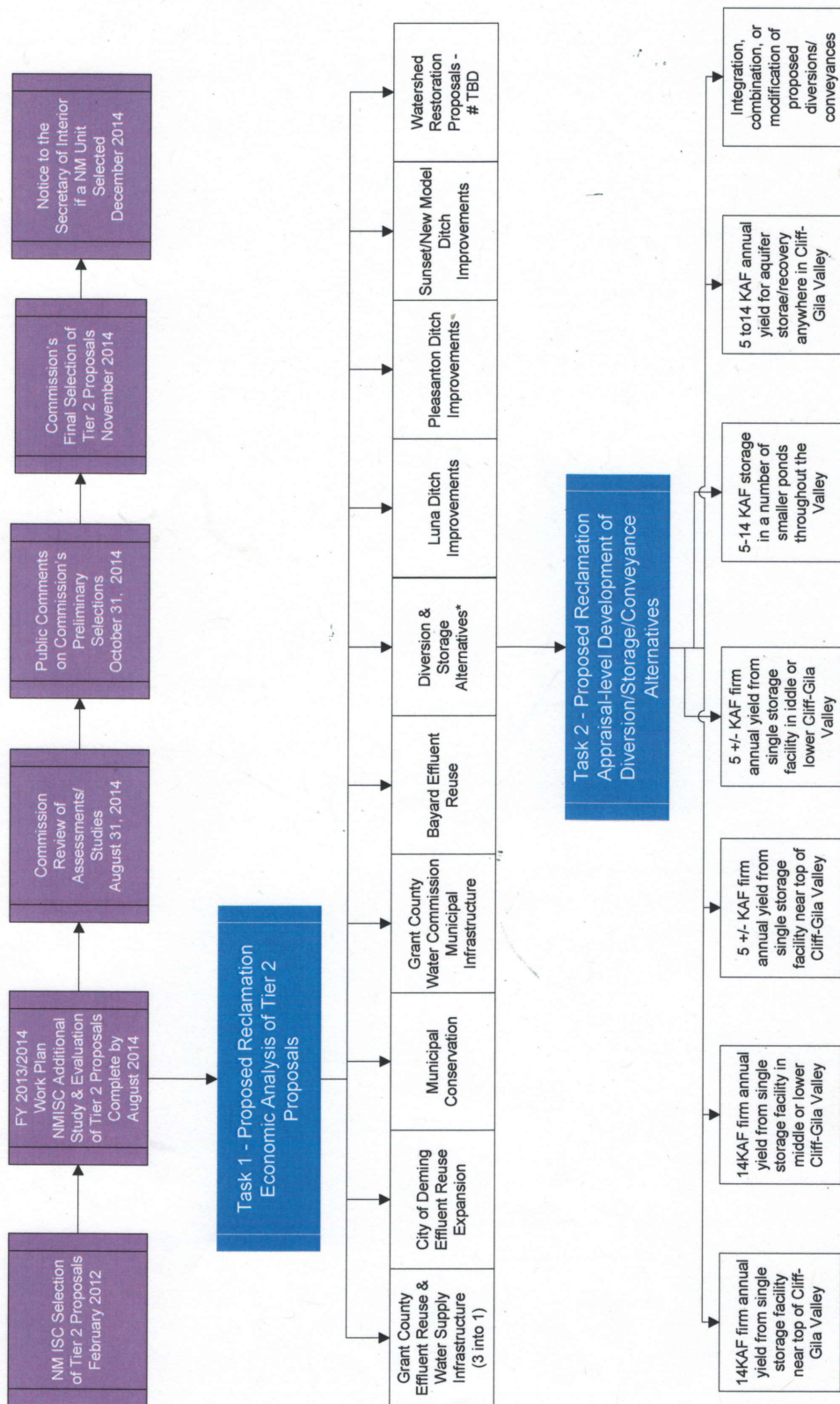


New Mexico Interstate Stream Commission Selection Process



* Combined/refined to meet agricultural, municipal and environmental needs per ISC provided diversion scenarios

Sources:
ISC FY 2013 & 2014 AWSA Work Plan, 6/13/12
For NM ISC Input Group Meeting, Glenwood, NM
September 28, 2012

**New Mexico AWSA Input Group Meeting
September 28, 2012**

Proposed Economic Analysis of NM ISC Tier 2 Proposals

General Information

- A. Analysis to be conducted by Reclamation's Economics and Resource Planning Team our Denver Technical Service Center (TSC)
- B. Reclamation Study Personnel
 - a. Steven Piper, Economist, Economics and Resource Planning, TSC
 - b. Mary Reece, Study Manager, Program Development Division, Phoenix Area Office (PXA0)

Economic Analyses of Each Tier 2 Proposal

- A. Benefit-Cost Analysis – Examine incremental changes in benefits and costs to agriculture, municipal and industrial supply, water quality, recreation, and fish and wildlife uses between the proposed alternatives and the current conditions
 - a. Gather cost data for each proposal
 - b. Gather or utilize existing benefits data for each proposal
 - c. Reclamation may need additional inputs for proposals including the quantity/quality of water affected and changes in use
- B. Regional Economic Impacts
 - a. Define the Impact Region
 - b. Evaluate activities affected by the proposed action
 - c. Estimate the change in regional expenditures/revenues associated with each activity and current conditions
 - d. Run these changes through an appropriate regional economic model (e.g., IMPLAN)
- C. Reporting
 - a. Target date for draft Economics report – May 2014, 2-week comment period for reviewers including the Input Group
 - b. Incorporate comments
 - c. Final Economics Report – No later than July 2014

Contact Information

For more information, please contact Mary Reece at mreece@usbr.gov, 623-773-6279.

**Appraisal-level Development of
Diversion/Storage/Conveyance Alternatives**

General Information

- A. Study to be conducted by Reclamation's Water Conveyance Group in the TSC
- B. Reclamation Study Personnel
 - a. Jeff Riley, Lead Engineer, Chief, Design & Construction Branch, PXAO
 - b. Ken Sayer, Civil Engineer, Water Conveyance Group, TSC
 - c. Alexander Smith, Lead Environmental Protection Specialist, Chief, Environmental Resource Management Division, PXAO
 - d. Mary Reece, Study Manager, Program Development Division, PXAO

Study Plan

- A. Stage 1 – Develop Plan of Study
 - a. Define scope of study
 - b. Develop Schedule
 - c. Confirm budget required
 - d. Site visit(s)
 - e. Finalize Plan – December 31, 2012
- B. Stage 2 – Perform actual study activities
 - a. Formulate alternatives/identify potential effects of each
 - b. Develop drawings and graphics depicting each alternative
 - c. Develop cost estimates for each alternative including capital costs and OM&R costs
- C. Reporting
 - a. Target date for draft Alternatives report – March 2014, 2-week comment period for reviewers including the Input Group
 - b. Incorporate comments
 - c. Final Alternatives report – No later than July 2014

Contact Information

For more information, please contact Mary Reece at mreece@usbr.gov, 623-773-6279.